

Tools:



DRILL



CROSS-TYPE-SCREWDRIVER

Parts:



① BODY X 1



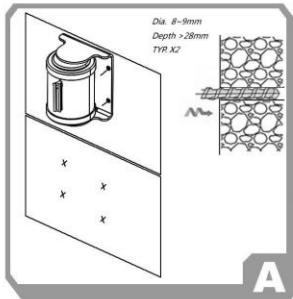
② PLASTIC EXPANSION PART X 6



③ WALL SHORE

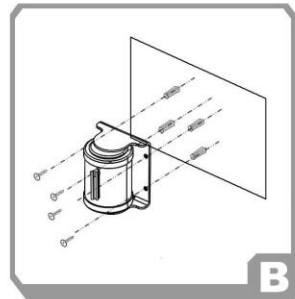


④ SELFLOCK



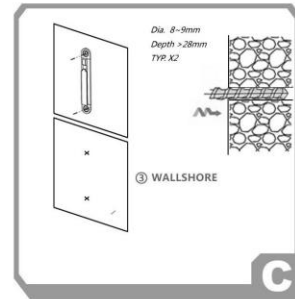
Mark the position on wall by using ① **BODY** as actually needed.

Drill holes for ② **PLASTIC EXPANSION PART** setup.



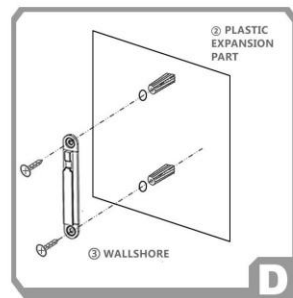
Insert ② **PLASTIC EXPANSION PART** into holes.

Tap and drive ST4 screws to fix ① **BODY** on wall tightly.



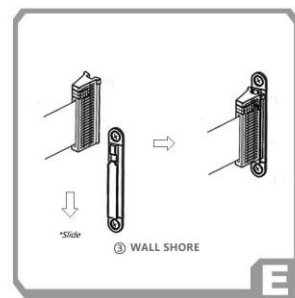
Mark the position on wall by using ③ **WALL SHORE** as actually needed.

Drill holes for ② **PLASTIC EXPANSION PART** setup.



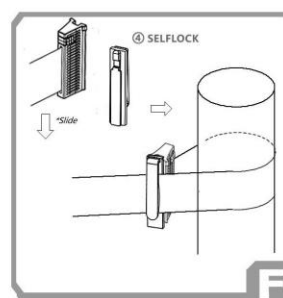
Insert ② **PLASTIC EXPANSION PART** into holes.

Tap and drive ST4 screws to fix ③ **WALL SHORE**



Link the belt-end handle to ③ **WALL SHORE**.

Handle should be linked and locked well.



④ **SELFLOCK** should lock belt itself without ③ **WALL SHOR** or in case of temporarily using.

